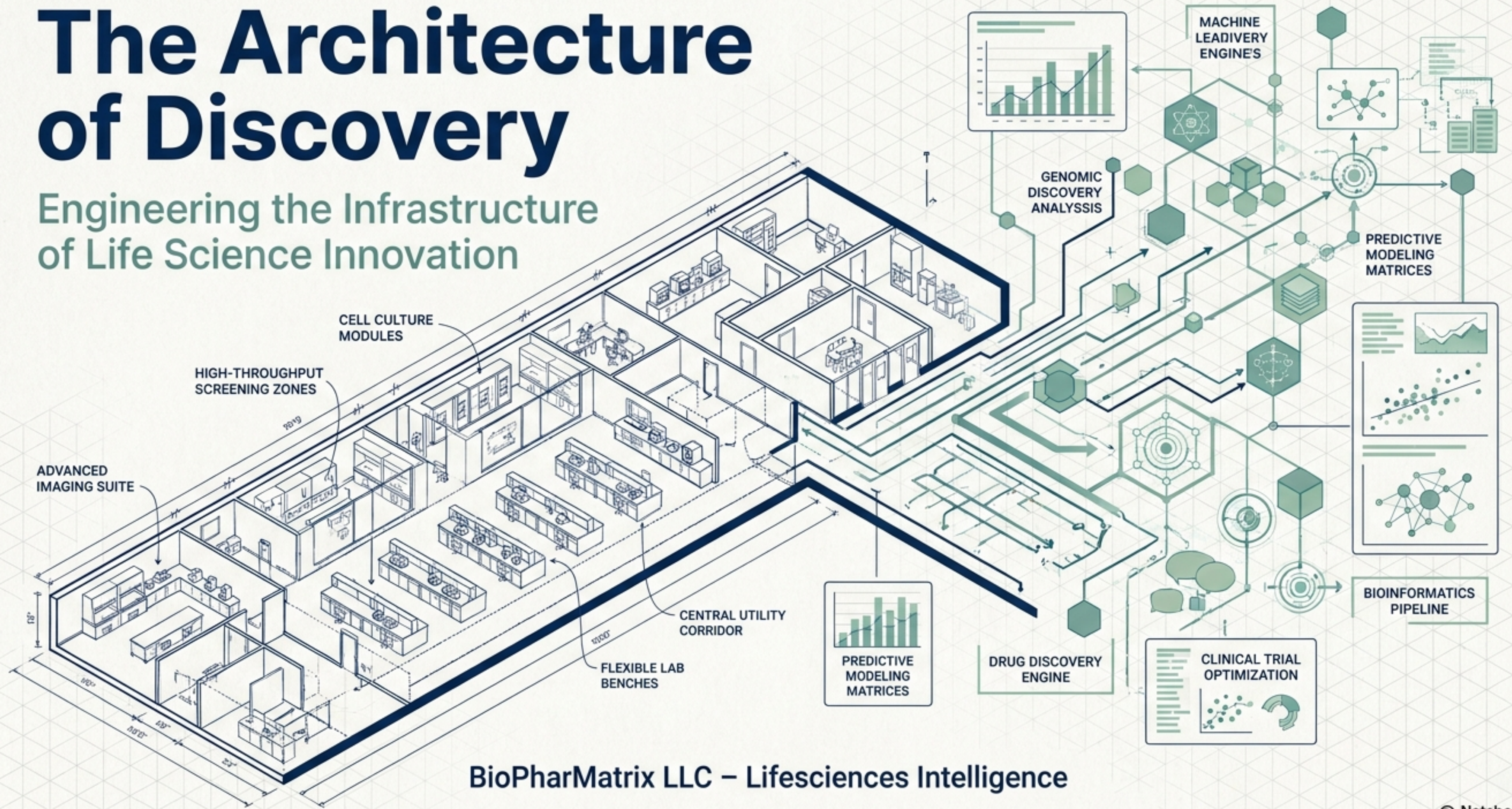


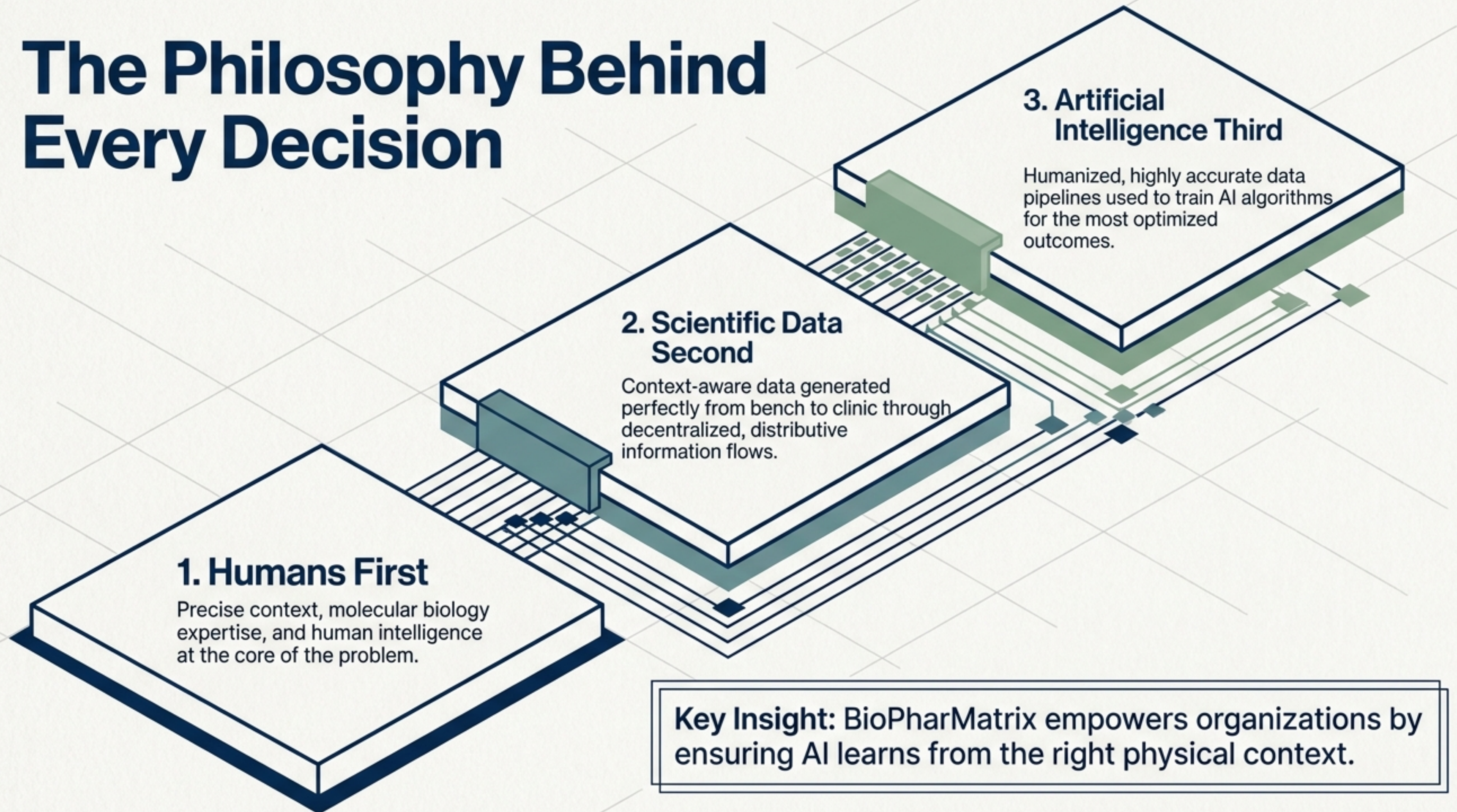
The Architecture of Discovery

Engineering the Infrastructure of Life Science Innovation



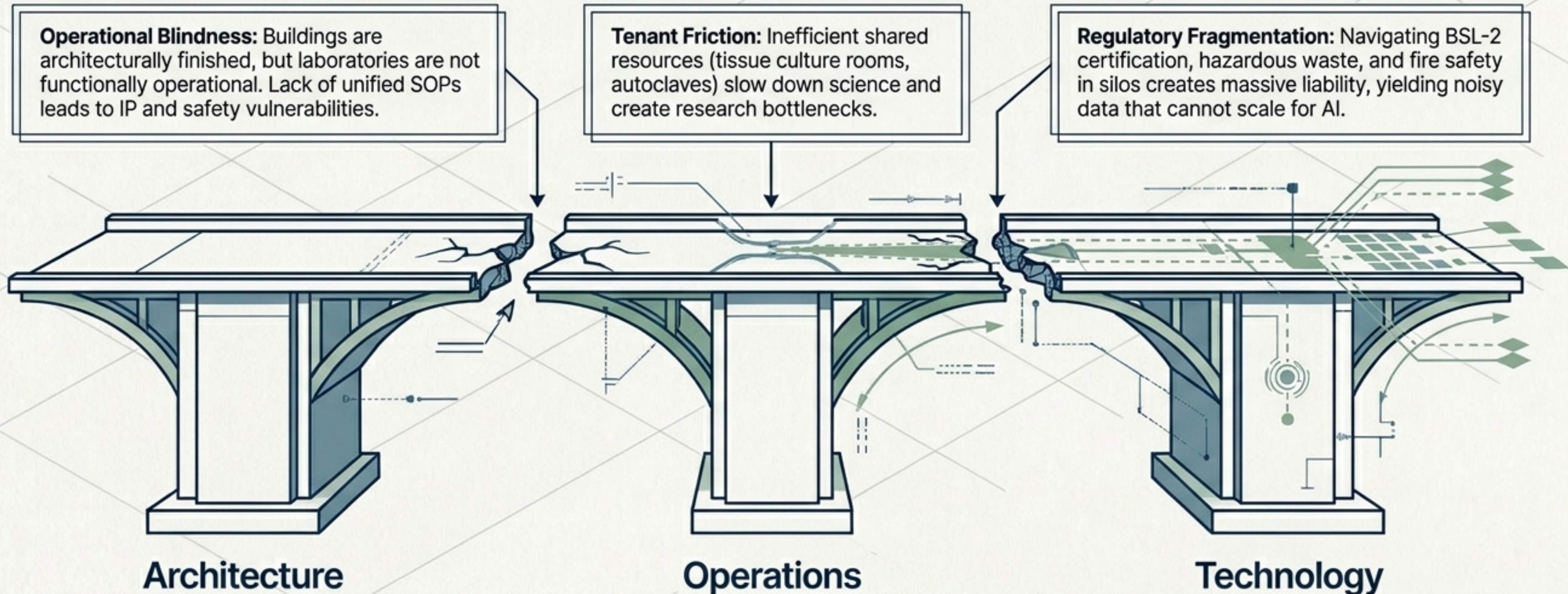
BioPharMatrix LLC – Lifesciences Intelligence

The Philosophy Behind Every Decision

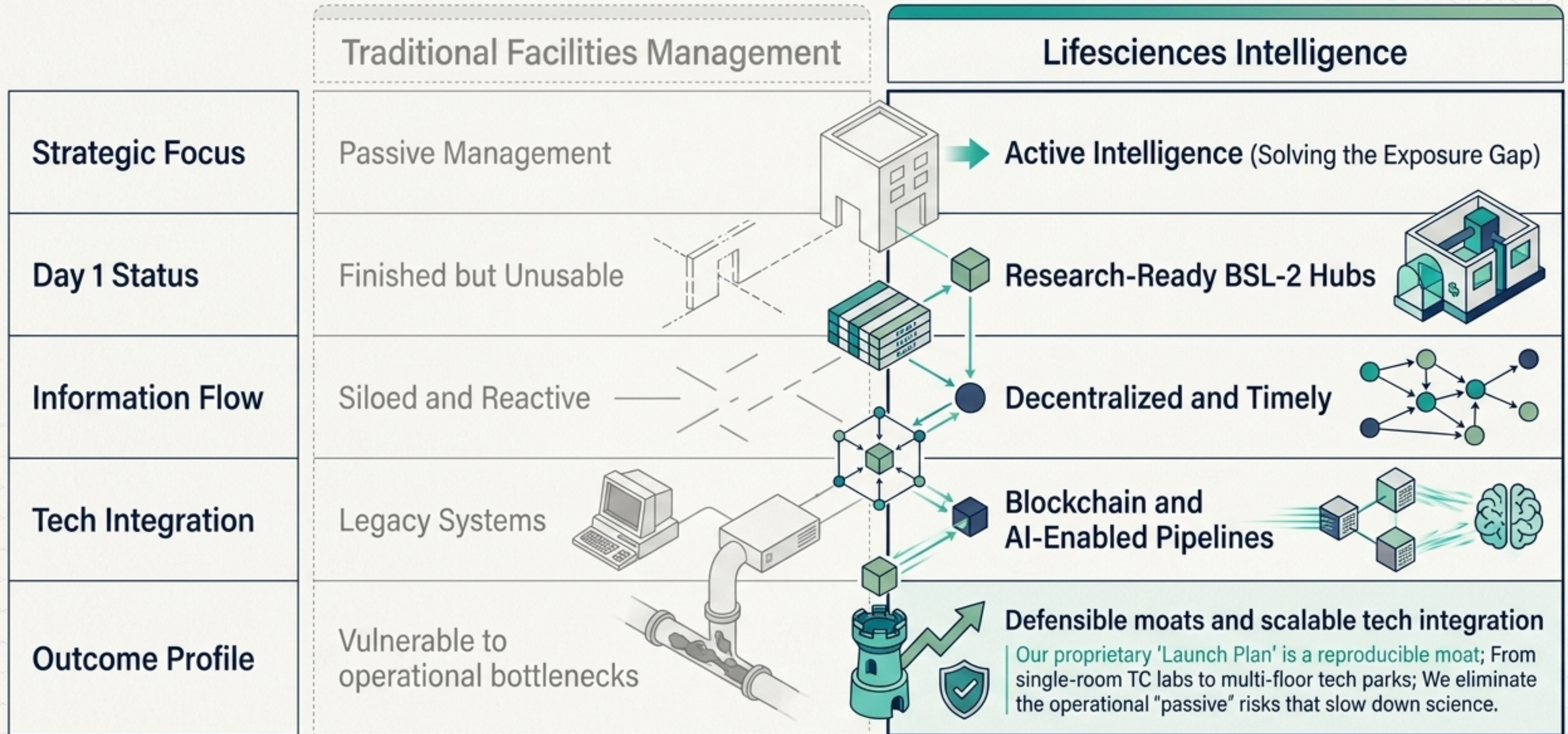


The Gap Between Architectural Vision and Biological Reality

The transition from a finished building to a functioning lab is where most incubator projects lose momentum.



From Physical Shells to Intelligent Ecosystems



The 5-Phase Translational Pathway

This reproducible Launch Plan is our defensible moat.

Phase V: Operational Coherence

Scientific floorplans and culture building enabling day-one research.

Phase III: Technical Logistics

Procurement excellence and automated asset lifecycles.

Phase IV: EHS Architecture

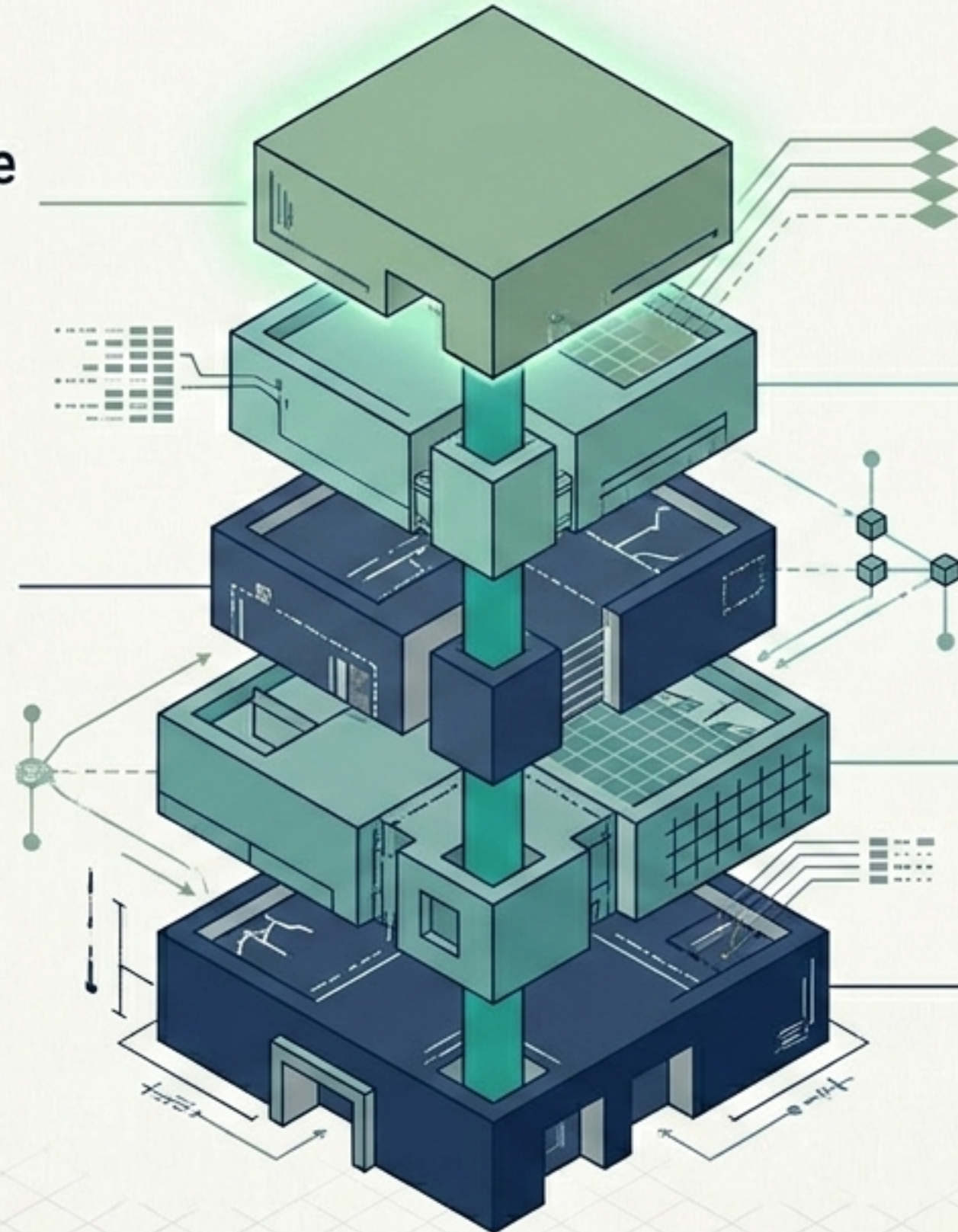
World-class hazardous waste design and BSL-2 integrity.

Phase II: Startup Readiness

Zone delineation, operational SOPs, and comprehensive manuals.

Phase I: Strategic Staffing

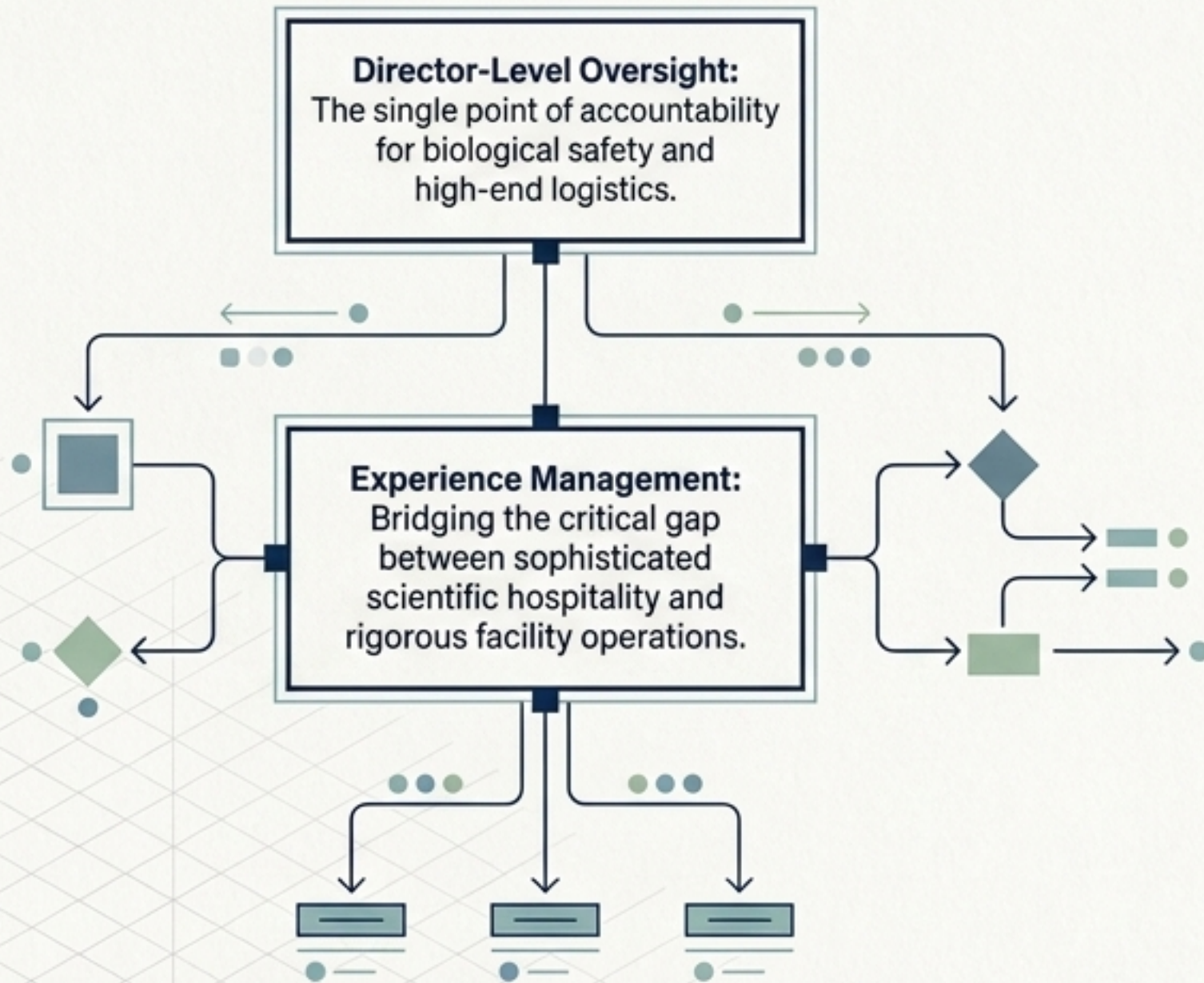
Director-level oversight and Experience Ambassadors.



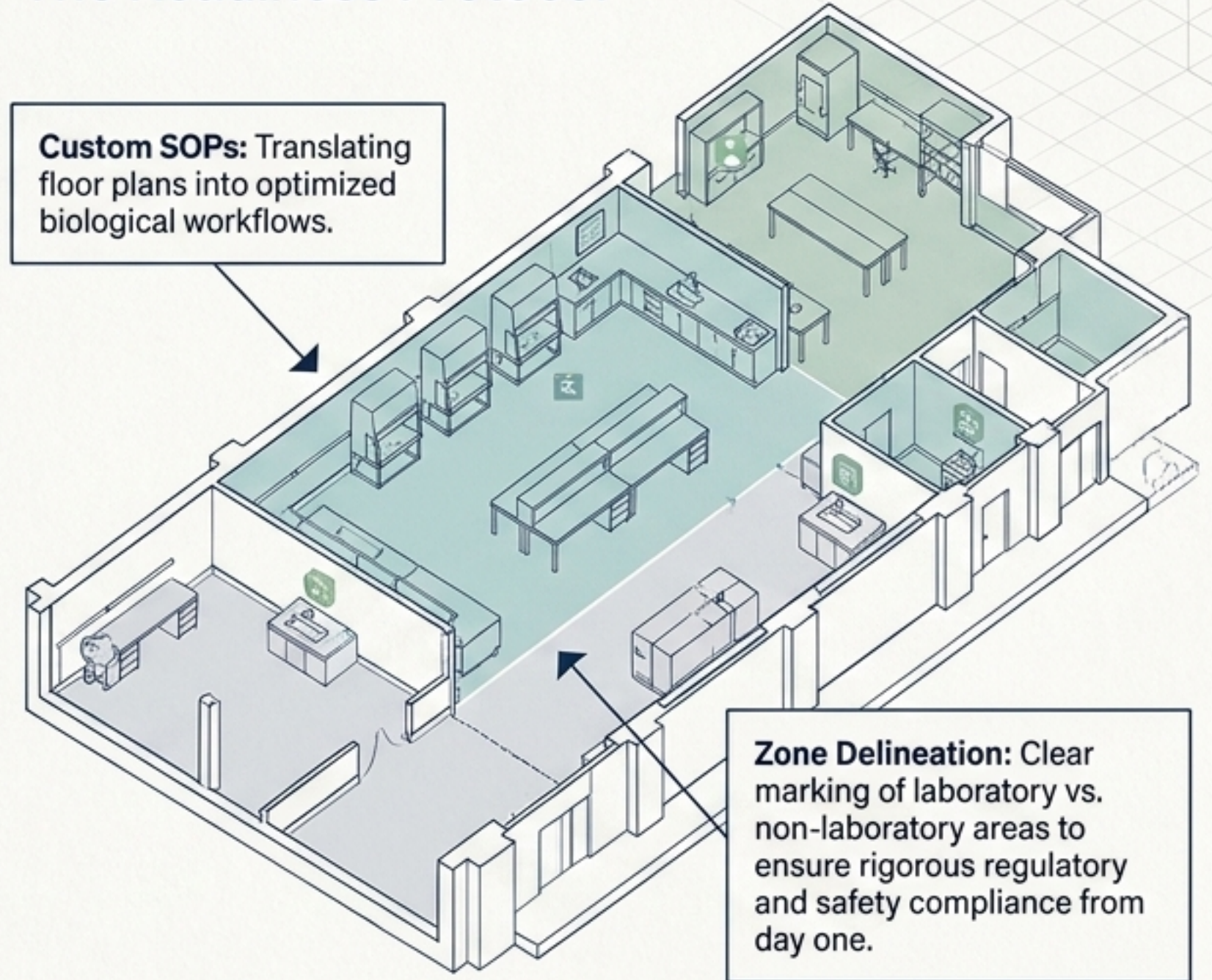
Engineering Operational Coherence

Phases I & II – Establishing the Human Context

The Human Element



The Readiness Protocol



Deploying High-Fidelity Logistics

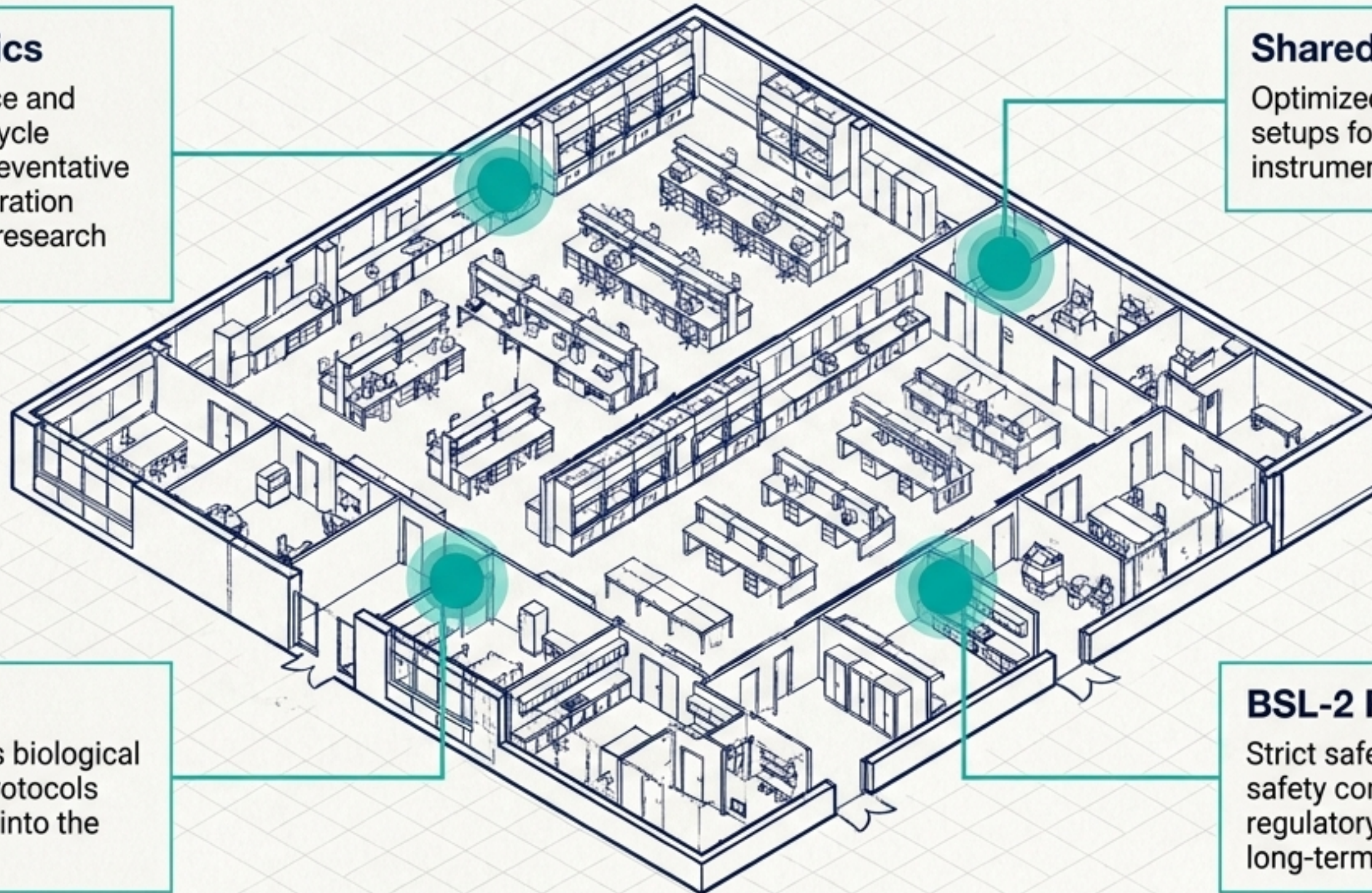
Phases III & IV – Securing the Infrastructure & EHS

Technical Logistics

Procurement excellence and automated Asset Lifecycle Management. Strict preventative maintenance and calibration scheduling to prevent research downtime.

Shared Resource Design

Optimized, validated architectural setups for high-value scientific instrumentation and core facilities.



EHS Oversight

World-class hazardous biological and chemical waste protocols seamlessly integrated into the physical space.

BSL-2 Readiness

Strict safety compliance, internal safety committees, and absolute regulatory integrity to maintain long-term laboratory hygiene.

Perfect Operations Produce Perfect Data

LASORATORY FACILITY AVUIT (BSL-2)

Inspector: _____ Date: _____
Inspector: _____

1. Physical Infrastructure

- Signage
- Access Control
- Access Control
- Core Delimitation
- Sign Delimitation

2. Engineering Controls & Safety

- BSC Certification
- Antoclere
- Autoclave
- Eyewash/Shower
- Eyewash/Shower

3. Waste Management

- Decontaminated
- Spill Kits
- Chemical Waste
- Spill Kits

Corrective Actions Required: _____

EQUIPMENT USAGE & MAINTENANCE LOG

Equipment Name: _____ Serial #: _____

Usage Log

| Con | Start | Deposition | Start/End | Status |
|-----|-------|------------|-----------|--------|
| | | | | |
| | | | | |
| | | | | |
| | | | | |

Maintenance & Calibration

| Con | Service Type | Provider | Next Due |
|-----|--------------|----------|----------|
| | | | |
| | | | |
| | | | |

MANDATORY: _____

EQUIPMENT USAGE & MAINTENANCE LOG

Inspector: _____ Date: _____
Inspector: _____

1. Usage Log

| Con | Start | Start/End | Status |
|-----|-------|-----------|--------|
| | | | |
| | | | |
| | | | |
| | | | |

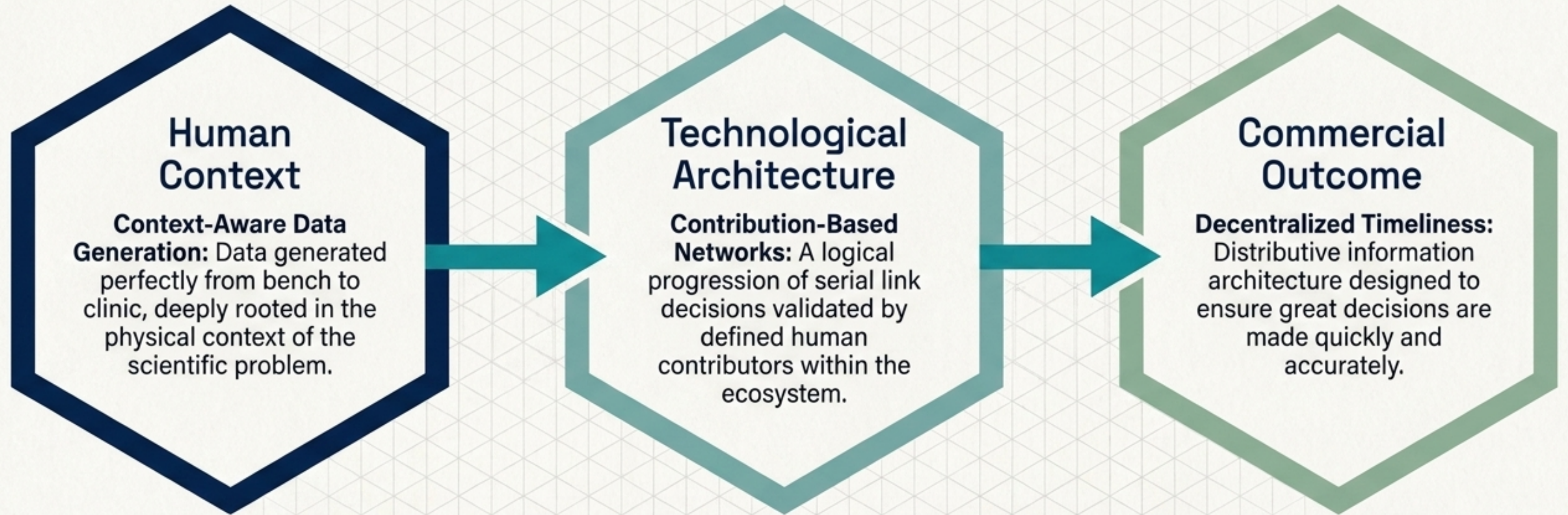
3. Waste Management

- Decontaminated
- Chemical Waste
- Decontaminated
- Spill Kits
- Eyewash/Shower
- Spill Kits

Corrective Actions Required: _____

Synthesis Insight: Our daily operational toolkits—from equipment calibration logs to incident tracking and vendor qualification—aren't just compliance paperwork. They are high-fidelity data nodes. By securing the physical infrastructure, we guarantee the integrity of the contextualized data required to train world-class AI.

Best Data Applied to Your AI Algorithm



We build human-first data pipelines. Accurate evaluation of early contextual data and physical information flow determines the ultimate commercial outcome.

Deploying Disruptive Technologies

Modernizing Legacy Systems for the Path from Bench to Clinic



The Instruments of Continuous Optimization

Proactively mitigating exposure gaps through digital operational mastery.

BSL-2 Facility Auditing



Real-time tracking of physical infrastructure, engineering controls, and strict hazardous waste management.

Equipment Usage & Maintenance



Automated logging of shared asset lifecycles, preventative maintenance schedules, and calibration verification.

Tenant Lifecycle Management

- ✓ **Part A: Onboarding**
 - ✓ Facility Orientation & Safety Training Completed
 - ✓ SOP Manual Acknowledged and Signed
- ✓ **Part B: Exit**
 - ✓ Assigned Bench Cleared and Decontaminated
 - ✓ Samples Removed from Shared Cold Storage

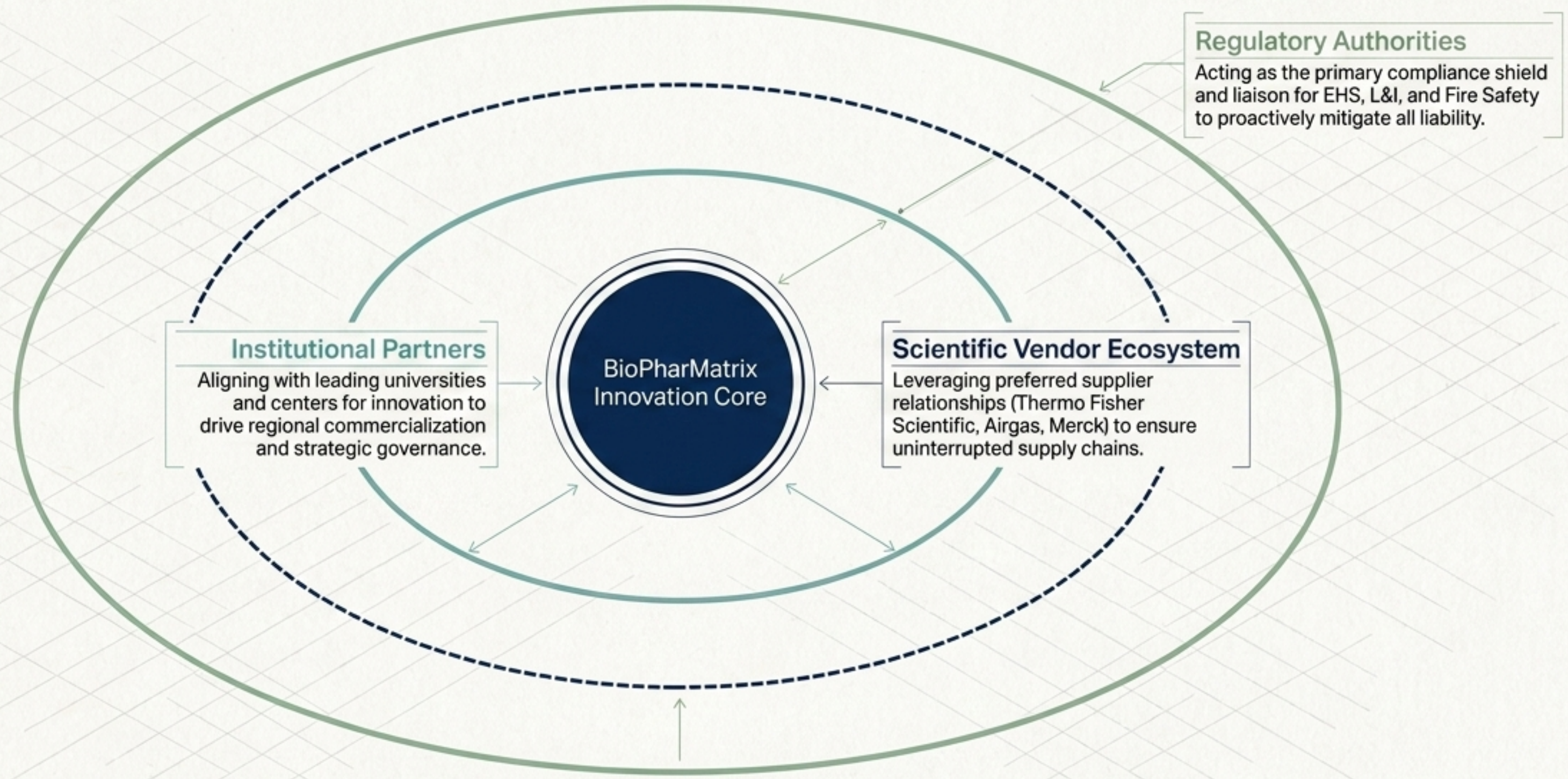
Streamlined onboarding (safety training, zone access) and precise exit protocols (decontamination, badge retrieval).

Vendor Qualification

- ✓ EHS Alignment
- ✓ Hazardous Materials (SDS Compliance)
- ✓ Permits
- ✓ Insurance
- ✓ Operational Logistics

Ensuring absolute EHS alignment, operational logistics, and safety data sheet (SDS) compliance for all suppliers.

Aligning Multi-Scale Ecosystems



A successful innovation center is defined by the quality of its relationships.
We solve the passive operational risks that slow down science.



Featured Achievement: The Pennovation Center

The Challenge: Launching Philadelphia's flagship, premier biotech incubator and shared-lab facility.

The Execution: Directed the complete operational launch. Engineered comprehensive Day 1 SOPs and managed the massive equipment donation lifecycle.

The Impact: Created a reproducible model for shared-lab operations that actively supports dozens of high-growth startups.

100%

BSL-2 Readiness
at launch.

100%

Occupancy reached
within record timelines.

Built for Life Science Organizations



Emerging Biotech & Diagnostics

For companies navigating preclinical to clinical transitions requiring expert guidance on data strategy and complex regulatory pathways.



University Tech Transfer

For technology transfer offices seeking specialized spinout enablement and rigorous commercialization strategy for academic innovations.



Corporate Venture & Accelerators

For investment groups requiring deep external innovation diligence and AI/blockchain integration strategy for portfolio companies.



Pharma R&D Teams

For established scientific teams looking to integrate modern AI and blockchain strategy with legacy systems to aggressively optimize R&D execution.

Let's Build the Future of Life Sciences Together

Ready to transform your life science strategy from the foundation up?

BioPharMatrix@gmail.com | www.biopharmatrix.com

Bridging scientific innovation with AI and disruptive technologies. Humans first, always.